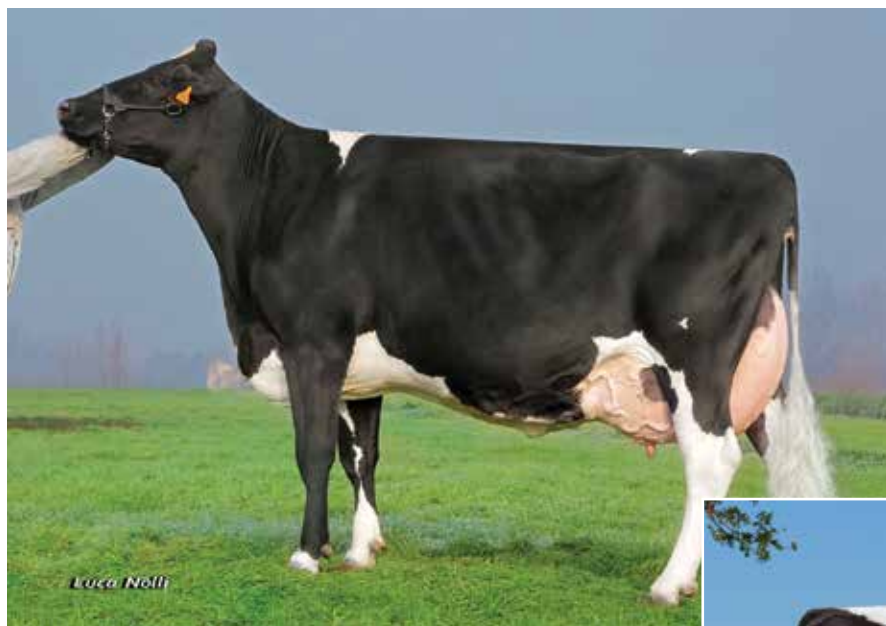


HB No: 72017991203159 Date of Birth: 15/09/2012 AI Code: HO5272



Queeslea (Iron) EX - 2nd Dam

- +Fat and protein %
- Excellent all round type

| Pedigree     |                             |
|--------------|-----------------------------|
| <b>Sire:</b> | Go-Farm Royal Eudon ET HH2C |
| <b>Dam:</b>  | ALL.Pablo Pokerface ET      |
| <b>MGS:</b>  | Goldwyn                     |
| <b>MGD:</b>  | Queeslea                    |



CariFarm Oblivion Vegan VG 85 Daughter

**Type Proof Daughters/Herds: UK 152/88**



## PTA December 2017

|             | Kg       | %    |
|-------------|----------|------|
| Milk        | 260      |      |
| Fat         | 24.3     | 0.17 |
| Protein     | 11.7     | 0.04 |
| Reliability | 70       |      |
| Dtrs/Herds  |          |      |
| PLI Rib% 62 | PLI £339 |      |

## Management Traits

|                    |      |
|--------------------|------|
| Calving Ease       | -1.4 |
| Milking Speed      | 0.77 |
| Temperament        | 1.35 |
| Somatic Cell Count | -13  |
| Lifespan           | 0.2  |
| Daughter Fertility | 1.1  |

## Linear Profile: Holstein UK – December 2017

| Trait                  |            | -3                                    | -2 | -1 | 0 | +1 | +2 | +3         |       | Value |
|------------------------|------------|---------------------------------------|----|----|---|----|----|------------|-------|-------|
| <b>Type Merit</b>      | Poor       | [Progressive bar chart from -3 to +3] |    |    |   |    |    | Excellent  | 2.27  |       |
| <b>Mammary</b>         | Poor       | [Progressive bar chart from -3 to +3] |    |    |   |    |    | Excellent  | 1.73  |       |
| <b>Legs &amp; feet</b> | Poor       | [Progressive bar chart from -3 to +3] |    |    |   |    |    | Excellent  | 1.86  |       |
| Stature                | 136 cm     | [Progressive bar chart from -3 to +3] |    |    |   |    |    | 160 cm     | 1.34  |       |
| Chest width            | Narrow     | [Progressive bar chart from -3 to +3] |    |    |   |    |    | Wide       | 0.64  |       |
| Body depth             | Shallow    | [Progressive bar chart from -3 to +3] |    |    |   |    |    | Deep       | 0.33  |       |
| Angularity             | Coarse     | [Progressive bar chart from -3 to +3] |    |    |   |    |    | Open Rib   | 0.42  |       |
| Rump angle             | High pins  | [Progressive bar chart from -3 to +3] |    |    |   |    |    | Low pins   | -0.37 |       |
| Rump width             | Narrow     | [Progressive bar chart from -3 to +3] |    |    |   |    |    | Wide       | 0.96  |       |
| Rear leg side          | Straight   | [Progressive bar chart from -3 to +3] |    |    |   |    |    | Sickled    | -0.31 |       |
| Foot angle             | Low        | [Progressive bar chart from -3 to +3] |    |    |   |    |    | Steep      | 0.96  |       |
| Fore udd att           | Loose      | [Progressive bar chart from -3 to +3] |    |    |   |    |    | Tight      | 2.17  |       |
| Rear udder ht          | Very low   | [Progressive bar chart from -3 to +3] |    |    |   |    |    | Very high  | 1.61  |       |
| Udder supp             | Broken     | [Progressive bar chart from -3 to +3] |    |    |   |    |    | Strong     | 1.42  |       |
| Udder depth            | Below hock | [Progressive bar chart from -3 to +3] |    |    |   |    |    | 20cm above | 1.04  |       |
| Front teat pl          | Outside    | [Progressive bar chart from -3 to +3] |    |    |   |    |    | Close      | 0.82  |       |
| Teat length            | Short      | [Progressive bar chart from -3 to +3] |    |    |   |    |    | Long       | 0.38  |       |
| Rear teat pl           | Apart      | [Progressive bar chart from -3 to +3] |    |    |   |    |    | Close      | 0.91  |       |
| Temperament            | Poor       | [Progressive bar chart from -3 to +3] |    |    |   |    |    | Good       | 1.35  |       |
| Ease of milk           | Slow       | [Progressive bar chart from -3 to +3] |    |    |   |    |    | Fast       | 0.77  |       |
| Locomotion             | Poor       | [Progressive bar chart from -3 to +3] |    |    |   |    |    | Excellent  | 2.09  |       |
| Cond Score             | Low        | [Progressive bar chart from -3 to +3] |    |    |   |    |    | High       | 1.26  |       |