

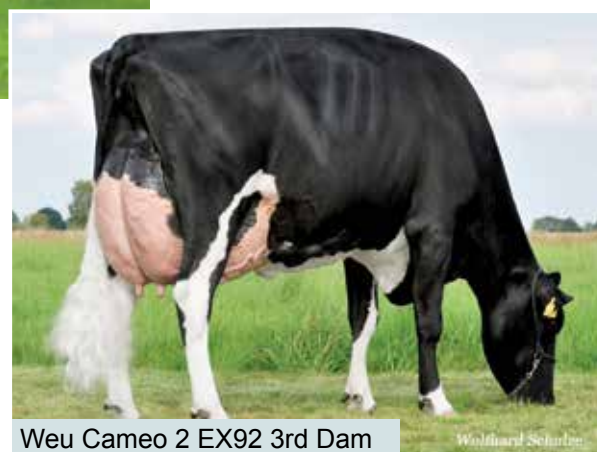
HB No: DEU000358939854 Date of Birth: 20/04/2016 AI Code: HO5174

Pedigree

Sire:	Bolaro
Dam:	RS Charlotte 76
MGS:	Aikman
MGD:	Weu Cameo 2



Ralma Christmas Fudge-ET (1)
VG88 LA 1 4th Dam



Weu Cameo 2 EX92 3rd Dam

- Milk and components
- Daughter fertility



PTA January 2018

	Kg	%
Milk	607	
Fat	29.7	0.07
Protein	23.4	0.04
Reliability	67	
Dtrs/Herds		
PLI Rib% 64	PLI £539	

Management Traits

Calving Ease	0.5
Milking Speed	0.28
Temperament	0.12
Somatic Cell Count	-15
Lifespan	0.3
Daughter Fertility	6.3

Linear Profile: Holstein UK – January 2018

Trait		-3	-2	-1	0	+1	+2	+3		Value
Type Merit	Poor								Excellent	1.05
Mammary	Poor								Excellent	0.94
Legs & feet	Poor								Excellent	0.83
Stature	136 cm								160 cm	0.83
Chest width	Narrow								Wide	-0.04
Body depth	Shallow								Deep	0.04
Angularity	Coarse								Open Rib	0.5
Rump angle	High pins								Low pins	0.45
Rump width	Narrow								Wide	0.04
Rear leg side	Straight								Sickled	-0.11
Foot angle	Low								Steep	0.17
Fore udd att	Loose								Tight	0.2
Rear udder ht	Very low								Very high	1.75
Udder supp	Broken								Strong	1.05
Udder depth	Below hock								20cm above	0.04
Front teat pl	Outside								Close	0.35
Teat length	Short								Long	0.13
Rear teat pl	Apart								Close	0.91
Teat pos side	Close								Apart	0.59
Temperament	Poor								Good	0.12
Ease of milk	Slow								Fast	0.28
Locomotion	Poor								Excellent	1.16
Cond Score	Low								High	0.32