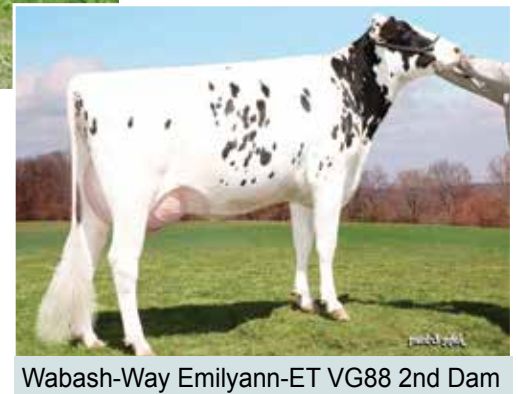


HB No: 72033990305886 Date of Birth: 29/10/2012 AI Code: HO4058



Pedigree	
Sire:	Numero Uno
Dam:	Emily ET
MGS:	Million
MGD:	Wabash-Way Emilyann ET

- High type and production
- Good health traits
- High fat and protein %



Wabash-Way Emilyann-ET VG88 2nd Dam

Type Proof Daughters/Herds: UK 17/12

holstein UK
holstein & british friesian

PTA December 2017		
	Kg	%
Milk	378	
Fat	23.3	0.11
Protein	10.8	-0.02
Reliability	36	
Dtrs/Herds		
PLI Rib% 35	PLI £344	

Management Traits – Italian figures	
Calving ease	102
Milking speed	104
Somatic cell count	103
Longevity	118
Fertility	107
Condition score	108

Linear Profile: Holstein UK – December 2017									
Trait		-3	-2	-1	0	+1	+2	+3	Value
Type Merit	Poor								Excellent 2.21
Mammary	Poor								Excellent 2.28
Legs & feet	Poor								Excellent 1.01
Stature	136 cm								160 cm 0.46
Chest width	Narrow								Wide 0.27
Body depth	Shallow								Deep -0.23
Angularity	Coarse								Open Rib 0.47
Rump angle	High pins								Low pins -0.1
Rump width	Narrow								Wide 1.65
Rear leg side	Straight								Sickled -0.99
Foot angle	Low								Steep 0.89
Fore udd att	Loose								Tight 2.16
Rear udder ht	Very low								Very high 1.71
Udder supp	Broken								Strong 2.39
Udder depth	Below hock								20cm above 1.4
Front teat pl	Outside								Close 1.73
Teat length	Short								Long -0.37
Rear teat pl	Apart								Close 1.05
Temperament	Poor								Good -0.44
Ease of milk	Slow								Fast 0.94
Locomotion	Poor								Excellent 0.61
Cond Score	Low								High 0.83